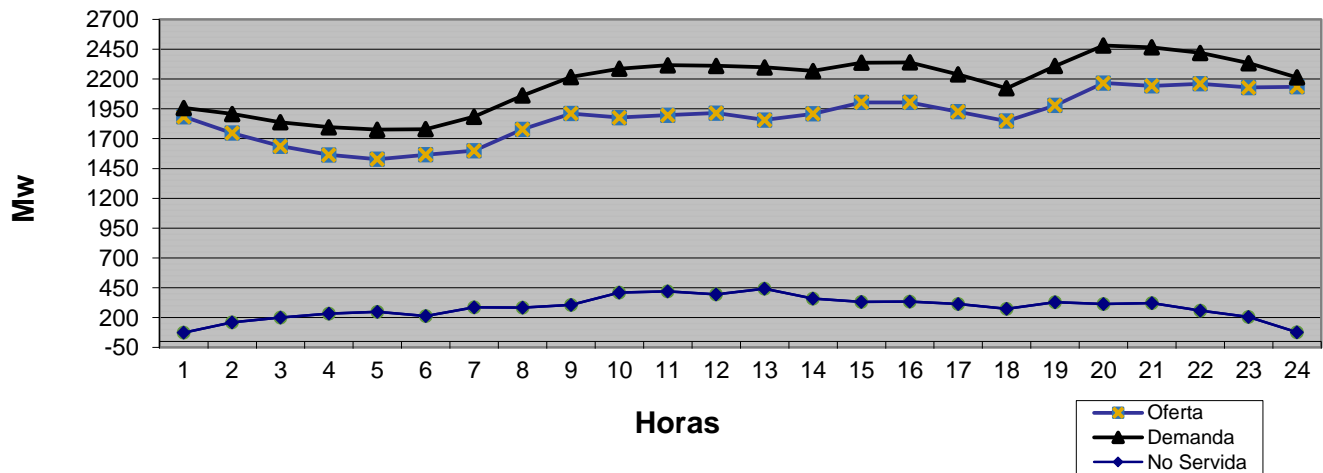


LISTA DE MERITO

| Orden | Unidad | Tipo de Combustible | Capacidad Disponible (MW) | Capacidad Disponible Acumulada (MW) | Costo Variable de Despacho (US\$/MWh) |
|-------|--------------------------|---------------------|---------------------------|-------------------------------------|---------------------------------------|
| 1 | BARAHONA CARBON | Carbón | 43.0 | | 39 |
| 2 | ITABO 2 | Carbón | 120.0 | 163.0 | 41 |
| 3 | AES ANDRES | Gas Natural | 300.0 | 463.0 | 43 |
| 4 | LOS ORÍGENES GAS NATURAL | Gas Natural | | 463.0 | 46 |
| 5 | ITABO 1 | Carbón | 120.0 | 583.0 | 49 |
| 6 | ESTRELLA DEL MAR 2 CFO | Fuel Oil #6 | | 583.0 | 58 |
| 7 | LOS MINA 5 | Fuel Oil #6 | | 583.0 | 59 |
| 8 | ESTRELLA DEL MAR 2 SFO | Gas Natural | | 583.0 | 63 |
| 9 | LOS MINA 6 | Gas Natural | 98.0 | 681.0 | 64 |
| 10 | ESTRELLA DEL MAR 2 CGN | Gas Natural | 110.6 | 791.6 | 66 |
| 11 | QUISQUEYA 2 | Fuel Oil #6 | 212.0 | 1,003.6 | 71 |
| 12 | PIMENTEL 3 | Gas Natural | 51.2 | 1,054.8 | 72 |
| 13 | ESTRELLA DEL MAR 2 SGN | Fuel Oil #6 | | 1,054.8 | 72 |
| 14 | LOS ORÍGENES FUEL OIL | Fuel Oil #6 | 58.9 | 1,113.7 | 72 |
| 15 | SULTANA DEL ESTE | Fuel Oil #6 | 63.0 | 1,176.7 | 74 |
| 16 | PALAMARA | Fuel Oil #6 | 96.5 | 1,273.3 | 76 |
| 17 | METALDOM | Fuel Oil #6 | 38.5 | 1,311.8 | 76 |
| 18 | PIMENTEL 1 | Fuel Oil #6 | 23.6 | 1,335.3 | 76 |
| 19 | PIMENTEL 2 | Fuel Oil #6 | 27.9 | 1,363.2 | 77 |
| 20 | LA VEGA | Fuel Oil #6 | 92.0 | 1,455.2 | 77 |
| 21 | MONTE RIO | Fuel Oil #6 | 93.0 | 1,548.2 | 78 |
| 22 | CEPP 2 | Fuel Oil #6 | 31.2 | 1,579.4 | 78 |
| 23 | CESPM 3 | Fuel Oil #2 | 95.0 | 1,674.4 | 79 |
| 24 | CEPP 1 | Fuel Oil #6 | 15.6 | 1,690.0 | 82 |
| 25 | INCA KM22 | Fuel Oil #2 | 13.4 | 1,703.4 | 84 |
| 26 | CESPM 2 | Fuel Oil #2 | 95.0 | 1,798.4 | 89 |
| 27 | BERSAL | Fuel Oil #6 | 18.0 | 1,816.4 | 89 |
| 28 | CESPM 1 | Fuel Oil #2 | 95.0 | 1,911.4 | 90 |
| 29 | SAN FELIPE | Fuel Oil #2,6 | 180.0 | 2,091.4 | 109 |
| 30 | RIO SAN JUAN | Fuel Oil #2 | | 7,311.7 | |
| 31 | HAINA TG | Fuel Oil #2 | | | |
| 32 | SAN PEDRO VAPOR | Fuel Oil #6 | | - | |
| 33 | | | | | |
| 34 | | | | | |
| 35 | | | | | |
| | CMG TOPE USS/MWh | 124.50 | | | |

Evolución de la Generación en las 24 Hrs del 14 de marzo de 2017



SUPERINTENDENCIA
DE ELECTRICIDADGERENCIA DE SUPERVISION SENI
REPORTE DIARIO DE GENERACION *

15 DE MARZO 2017

| Orden | Unidad | Potencia Efectiva (MW) | Generación 14/3/17 en Hora Dem. Max. (MW) |
|-------|--------------------------|------------------------|---|
| 1 | AES Andres | 281.3 | 312.0 |
| 2 | Los Mina 5 | 118.0 | |
| 3 | Los Mina 6 | 118.0 | 86.0 |
| 4 | Itabo 1 | 117.0 | 128.0 |
| 5 | Itabo 2 | 110.0 | 132.0 |
| 6 | Barahona Carbon | 42.4 | 45.0 |
| 7 | Haina TG | 99.8 | |
| 8 | Quisqueya 2 | 220.9 | 183.8 |
| 9 | Sultana del Este | 66.8 | 60.3 |
| 10 | CEPP 1 | 16.2 | 14.8 |
| 11 | CEPP 2 | 49.0 | 24.0 |
| 12 | CESPM 1 | 96.3 | |
| 13 | CESPM 2 | 98.4 | |
| 14 | CESPM 3 | 99.6 | 85.0 |
| 15 | La Vega | 87.6 | 73.6 |
| 16 | Palamara | 102.5 | 84.0 |
| 17 | Pimentel 1 | 30.8 | 18.6 |
| 18 | Pimentel 2 | 27.5 | 21.4 |
| 19 | Pimentel 3 | 50.4 | 34.0 |
| 20 | Metaldom | 40.7 | 38.6 |
| 21 | Los Origenes | 57.3 | 51.3 |
| 22 | Monte Rio | 96.6 | 87.5 |
| 23 | Quisqueya 1 | 215.0 | 155.4 |
| 24 | San Felipe | 179.3 | |
| 25 | Estrella del Mar 2 | 108.6 | 109.5 |
| 26 | INCA KM22 | 14.2 | 12.9 |
| 27 | Bersal | 23.8 | 17.3 |
| 28 | Rio San Juan | 1.7 | |
| 29 | | | |
| 30 | Subtotal Termicas | 2,569.7 | 1,775.0 |
| 31 | Larimar** | 50.0 | 24.0 |
| 32 | Los Cocos/Q. Cabrera | 85.3 | 7.0 |
| 33 | Mte Plata Solar** | 30.0 | |
| 34 | Hidroelectricas** | 450.0 | 361.6 |
| | Totales | 3,185.0 | 2,168 |

(*) Fuente: Organismo Coordinador.

(**) Unidades que no definen costo marginal

| Demanda y Generación | |
|---|---------------|
| Dem. Máx. Abastecida 14/3/17 | |
| Demanda (MW) | 2,168 |
| Hora Dem. Max. | 8:00 p.m |
| No Abastecida (MW) en Horas Dem. Max. | |
| EDENORTE | 48 (9.1%) |
| EDESUR | 130.7 (20.5%) |
| EDEESTE | 135.0 (24.3%) |
| Total (MW) | 314 |
| Disponibilidad en hora de Dem. Máx. Abastecida el 14/3/17 (MW) | |
| Termica | 2,294.0 |
| Renovable | 31.0 |
| Hidroelectrica | 361.6 |
| Total | 2,686.6 |

Unidades Indisponibles

CESPM 1 y 2 (95 MW C/U)
Causa: Orden administrativa*
Durante la semana del 11 al 17 de marzo 2017.

Los Mina 5 (105 MW)
Salida: 19 enero 2017
Causa: Falla en las bobinas del estator del generador, se estima que LM estará regresando al SENI alrededor del 24 de marzo de 2017.

Eventos Relevantes en el SENI