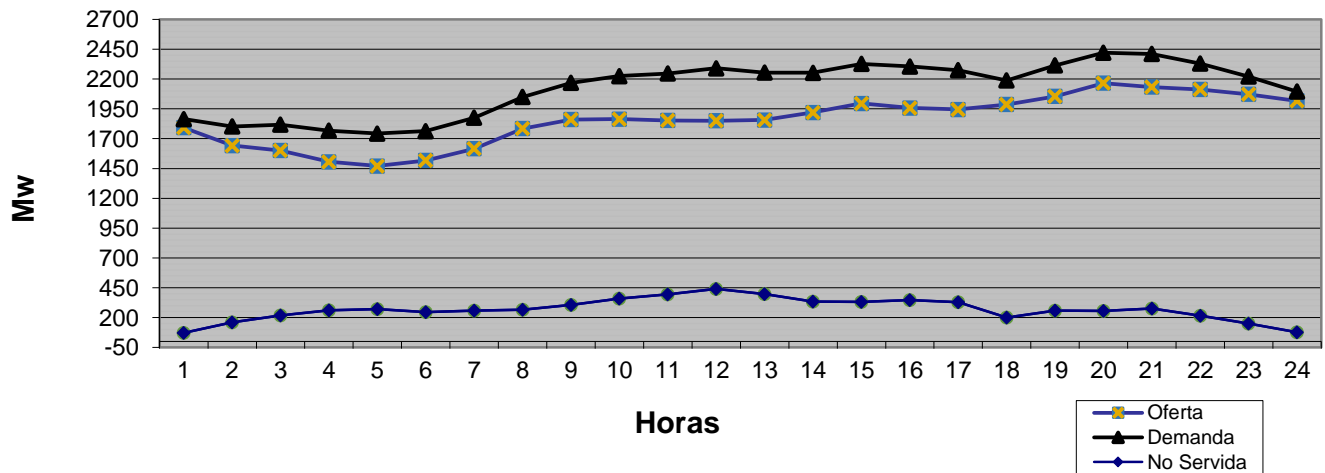


## LISTA DE MERITO

| Orden | Unidad                      | Tipo de Combustible | Capacidad Disponible (MW) | Capacidad Disponible Acumulada (MW) | Costo Variable de Despacho (US\$/MWH) |
|-------|-----------------------------|---------------------|---------------------------|-------------------------------------|---------------------------------------|
| 1     | ITABO 1                     | Carbón              |                           |                                     | 34                                    |
| 2     | ITABO 2                     | Carbón              | 120.0                     | 120.0                               | 35                                    |
| 3     | BARAHONA CARBON             | Carbón              |                           | 120.0                               | 39                                    |
| 4     | AES ANDRES                  | Gas Natural         | 300.0                     | 420.0                               | 44                                    |
| 5     | LOS ORÍGENES GAS NATURAL    | Gas Natural         |                           | 420.0                               | 46                                    |
| 6     | ESTRELLA DEL MAR 2 CFO      | Fuel Oil #6         |                           | 420.0                               | 58                                    |
| 7     | ESTRELLA DEL MAR 2 SFO      | Fuel Oil #6         |                           | 420.0                               | 63                                    |
| 8     | LOS MINA 5                  | Gas Natural         |                           | 420.0                               | 65                                    |
| 9     | ESTRELLA DEL MAR 2 CGN      | Gas Natural         | 110.6                     | 530.6                               | 65                                    |
| 10    | LOS MINA 6                  | Gas Natural         | 98.0                      | 628.6                               | 69                                    |
| 11    | ESTRELLA DEL MAR 2 SGN      | Gas Natural         |                           | 628.6                               | 71                                    |
| 12    | QUISQUEYA 2                 | Gas Natural         | 212.0                     | 840.6                               | 71                                    |
| 13    | PIMENTEL 3                  | Fuel Oil #6         | 51.2                      | 891.8                               | 72                                    |
| 14    | LOS ORÍGENES POWER FUEL OIL | Fuel Oil #6         | 58.9                      | 950.7                               | 73                                    |
| 15    | SULTANA DEL ESTE            | Fuel Oil #6         | 63.0                      | 1,013.7                             | 73                                    |
| 16    | PALAMARA                    | Fuel Oil #6         | 96.0                      | 1,109.7                             | 75                                    |
| 17    | METALDOM                    | Fuel Oil #6         | 38.5                      | 1,148.2                             | 76                                    |
| 18    | CEPP 2                      | Fuel Oil #6         | 41.6                      | 1,189.8                             | 76                                    |
| 19    | LA VEGA                     | Fuel Oil #6         | 87.5                      | 1,277.3                             | 76                                    |
| 20    | PIMENTEL 1                  | Fuel Oil #6         | 31.4                      | 1,308.8                             | 77                                    |
| 21    | PIMENTEL 2                  | Fuel Oil #6         | 27.9                      | 1,336.6                             | 78                                    |
| 22    | MONTE RIO                   | Fuel Oil #6         | 93.0                      | 1,429.6                             | 78                                    |
| 23    | CEPP 1                      | Fuel Oil #6         | 15.6                      | 1,445.2                             | 80                                    |
| 24    | CESPM 3                     | Fuel Oil #2         |                           | 1,445.2                             | 82                                    |
| 25    | INCA KM22                   | Fuel Oil #2         | 13.4                      | 1,458.6                             | 84                                    |
| 26    | CESPM 1                     | Fuel Oil #2         |                           | 1,458.6                             | 86                                    |
| 27    | BERSAL                      | Fuel Oil #6         | 18.0                      | 1,476.6                             | 87                                    |
| 28    | CESPM 2                     | Fuel Oil #2         | 95.0                      | 1,571.6                             | 87                                    |
| 29    | SAN FELIPE                  | Fuel Oil #2,6       | 180.0                     | 1,751.6                             | 106                                   |
| 30    | HAINA TG                    | Fuel Oil #2         |                           | 1,751.6                             | 150                                   |
| 31    | RIO SAN JUAN                | Fuel Oil #2         |                           |                                     |                                       |
| 32    | SAN PEDRO VAPOR             | Fuel Oil #6         |                           | -                                   |                                       |
| 33    |                             |                     |                           |                                     |                                       |
| 34    |                             |                     |                           |                                     |                                       |
| 35    |                             |                     |                           |                                     |                                       |
|       | CMG TOPE USS/MWh            | 123.71              |                           |                                     |                                       |

**Evolución de la Generación en las 24 Hrs del  
02 de marzo de 2017**



03 DE MARZO 2017

| Orden | Unidad                   | Potencia Efectiva (MW) | Generación 02/3/17 en Hora Dem. Max. (MW) |
|-------|--------------------------|------------------------|---|
| 1     | AES Andres               | 281.3                  | 315.0                                     |
| 2     | Los Mina 5               | 118.0                  |   |
| 3     | Los Mina 6               | 118.0                  | 87.0                                      |
| 4     | Itabo 1                  | 117.0                  |   |
| 5     | Itabo 2                  | 110.0                  | 132.0                                     |
| 6     | Barahona Carbon          | 42.4                   |   |
| 7     | Haina TG                 | 99.8                   |   |
| 8     | Quisqueya 2              | 220.9                  | 201.0                                     |
| 9     | Sultana del Este         | 66.8                   | 63.0                                      |
| 10    | CEPP 1                   | 16.2                   | 7.2                                       |
| 11    | CEPP 2                   | 49.0                   | 26.8                                      |
| 12    | CESPM 1                  | 96.3                   |   |
| 13    | CESPM 2                  | 98.4                   | 74.7                                      |
| 14    | CESPM 3                  | 99.6                   |   |
| 15    | La Vega                  | 87.6                   | 91.1                                      |
| 16    | Palamara                 | 102.5                  | 94.2                                      |
| 17    | Pimentel 1               | 30.8                   | 19.2                                      |
| 18    | Pimentel 2               | 27.5                   | 22.1                                      |
| 19    | Pimentel 3               | 50.4                   | 36.9                                      |
| 20    | Metaldom                 | 40.7                   | 38.1                                      |
| 21    | Los Origenes             | 57.3                   | 52.0                                      |
| 22    | Monte Rio                | 96.6                   | 85.8                                      |
| 23    | Quisqueya 1              | 215.0                  | 105.0                                     |
| 24    | San Felipe               | 179.3                  | 178.0                                     |
| 25    | Estrella del Mar 2       | 108.6                  | 107.2                                     |
| 26    | INCA KM22                | 14.2                   | 13.4                                      |
| 27    | Bersal                   | 23.8                   | 16.9                                      |
| 28    | Rio San Juan             | 1.7                    |   |
| 29    |                          |                        |   |
| 30    | <b>Subtotal Termicas</b> | <b>2,569.7</b>         | <b>1,766.5</b>                            |
| 31    | Larimar**                | 50.0                   | 16.0                                      |
| 32    | Los Cocos/Q. Cabrera     | 85.3                   | 21.0                                      |
| 33    | Mte Plata Solar**        | 30.0                   |   |
| 34    | Hidroelectricas**        | 450.0                  | 361.8                                     |
|       | <b>Totales</b>           | <b>3,185.0</b>         | <b>2,165</b>                              |

(\*) Fuente: Organismo Coordinador.

(\*\*) Unidades que no definen costo marginal

| Demanda y Generación  |              |
|---|--------------|
| <b>Dem. Máx. Abastecida 02/3/17</b>                                   |              |
| Demanda (MW)  | 2,165        |
| Hora Dem. Max.  | 8:00 p.m     |
| <b>No Abastecida (MW) en Horas Dem. Max.</b>                          |              |
| EDENORTE  | 65.0(11.7%)  |
| EDESUR  | 102.5(16.6%) |
| EDEESTE   | 88.0(14.7%)  |
| Total (MW)  | 255          |
| <b>Disponibilidad en hora de Dem. Máx. Abastecida el 02/3/17 (MW)</b> |              |
| Termica   | 1,920.3      |
| Renovable   | 37.0         |
| Hidroelectrica  | 361.8        |
| Total   | 2,319.1      |

| Unidades Indisponibles  |
|---|
| <b>CESPM 1 y 3 (95 MW C/U)</b><br>Causa: Orden administrativa*<br>Durante la semana del 25 de febrero al 03 de marzo 2017.  |
| <b>Los Mina 5 (105 MW)</b><br>Salida: 19 enero 2017<br>Causa: Falla en las bobinas del estator del generador, se estima que LM estará regresando al SENI alrededor del 24 de marzo de 2017. |
| <b>Itabo 1: (128 MW)</b><br>Causa: Mantenimiento mayor<br>Desde el 11/02/2017 al 03/03/2017.  |
| <b>Barahona Carbon (45 MW)</b><br>Causa: Mantenimiento mayor<br>Desde el 19/02/17 al 11/03/17.  |
| <b>Eventos Relevantes en el SENI</b>  |
|   |